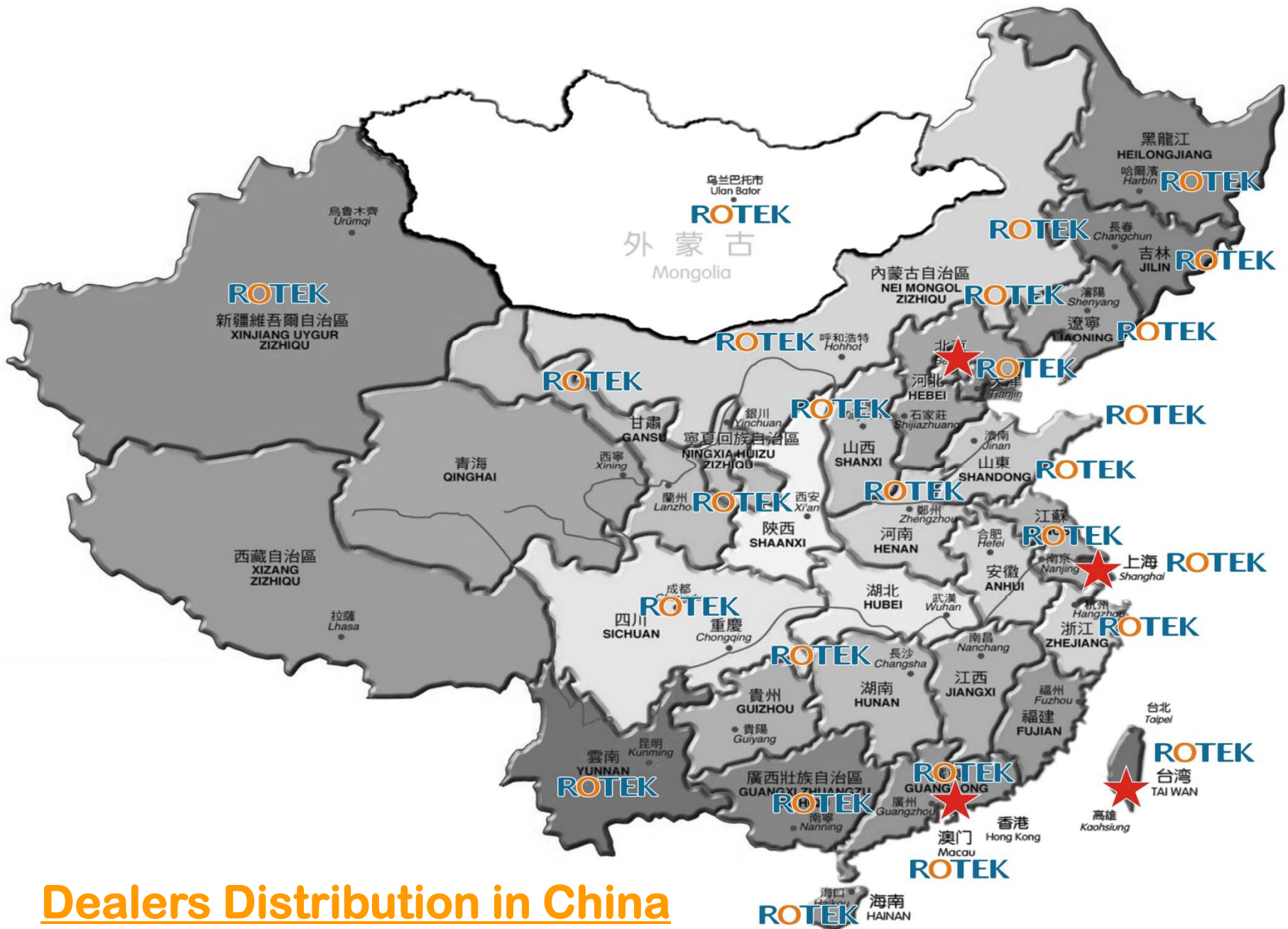


ROTEK
Purification For Life



ROTEK Product Categories:

- **Water Treatment Systems**
(industrial & commercials System Equipment)
- **Turn-Key** Project & Service
- **ATLAS** Housings & Cartridges
- **Domestic** products Distribution & shops
(**S-100** Plan for “**ROTEKHOME**” series products)



Dealers Distribution in China

Industrial & Commercial System Products

Standard System Units

Commercial RO (Reverse Osmosis) Systems

Type RE / RD Unit



- * Stainless Steel Frame & Parts
- * High Pressure Membrane Vessel
- * LED Controller for monitoring:
 - TDS (Water Quality)
 - Feed Water
 - Water Purification Process
 - Tank Filling Level
- * Capacity Range: **250 ~3000** GPD



Unit Models

RE 250

RE 500

RE 800

RD 1500

RD 3000

Commercial RO (Reverse Osmosis) Systems

Type RT / RH Unit



- * Stainless Steel Frame & Parts
- * High Pressure Membrane Vessel
- * LED Controller for monitoring:
 - TDS (Water Quality)
 - Feed Water
 - Water Purification Process
 - Tank Filling Level
- * Capacity Range: **4000 ~6000** GPD



Unit Models

RT 4000

RT 5000

RT 6000

RH 4000

RH 6000

Commercial / Industrial “Pre-Filter + RO” Systems

Type PK Unit



- * Booster Pump + 3 Pre-filter (FRP tanks) + RO Unit:
 - Stable Feed Water Source
 - High capacity on pre-filtration
 - Easy to install & material re-fill
 - Perfect solution for drinking water supply at hotel, school, business buildings, factory, etc.
- * Stainless Steel Frame & Parts, Easy Maintenance
- * High Pressure Membrane Vessel & FRP Tanks
- * Capacity Range: **1000 ~6000** GPD

Unit Models

RK 1000

RK 1500

RK 3000

RK 4000

RK 5000

RK 6000

Industrial RO Systems for Brackish Water

Type **BW / A,B,C** Unit



- * A Complete Full-function Unit enable to purify Brackish Water from TDS 2000 to 12000ppm (BWA: 2000&below, BWB:2000-7000, BWC:7000-12000)
- * No need for extra pre-filtration units
- * Special dosing device functions as a softener
- * Produces purified RO water under TDS 60ppm
- * PLC Controller & patented Auto Water Flushing system
- * Capacity Range: **1500 ~ 12000** GPD

Unit Models

RW 1500

RW 4000

RW 6000

RW12000

Industrial Large RO Systems

Type **RL** Unit



- * Stainless Steel or Powder Coated Frame
- * High Pressure 8" FRP Membrane Vessel
- * PLC Controller for monitoring:
 - TDS (Water Quality)
 - Feed Water
 - Water Purification Process
 - Pump, pressure valve & detectors
 - On-screen operation & online control
- * Open-type assembly, easy for maintenance
- * Capacity Range: **2T ~ 200T** /per hour



Unit Models

RL-2T

RL-3T

RL-5T

RL-10T

RL-15T

RL-20T

RL-30T

RL-50T

**New Design
Product**



HOME - Domestic RO (Reverse Osmosis) Systems Type RA Unit



- * Standard 5 Stages Filtration:
5/1-micro PP+CTO+RO-Membrane+Post Carbon
- * Italy ATLAS Housings & Membrane Shell
- * 2-year Warranty Booster Pump
- * Options:
 - 185mm UV Sterilizer(10 Watt)
 - Post-Calcite Cartridge
 - Computer Box Controller
 - Custom Color & OEM Branding
 - ROTTEK Housings & Membrane Shell
- * Capacity Range: **50~150** GPD (NSF Pressure Tank)



Unit Models

RA 50

RA 75

RA 100

RA150



HOME – Domestic Portable Filtration System Type F713 Unit



- * Filtration Type:
 - Purifier: for Particle or Iron
 - Softener: for Hardness & Scale

- * Power Type:
 - Without Pump
 - With 400GPD Booster Pump

- * 2-year warranty Booster Pump

- * Filtration Stages:
 - Polypropylene Cartridge (PP)
 - Anti-Iron Media or Resin
 - Carbon Block Cartridge (CTO)

- * Capacity Range: **400** GPD (NSF FRP Tank)



Unit Models

F713-F F713-FP F713-S F713-SP



Commercial RO (Reverse Osmosis) Systems Type **RB** Unit



- * 5-micro PP + OTC + RO Membrane
- * Italy Import Housings + Booster Pump
- * Options:
 - 185mm UV Sterilizer
 - TDS Indicator
 - Custom Color
- * Space Saving (950x550x250mm, 75kg)
- * Capacity Range: **200~800** GPD



Unit Models RB 200 RB 400 RB 600 RB 800



Commercial RO (Reverse Osmosis) Systems Type RC Unit



1300x550x1635mm
310kg



- * Booster Pumps + Sediment Filter + Carbon Filter + PP Secure Filter + RO Pump + RO Membrane + Ozone Sterilizer + Tank (220L)
- * All-in-one RO System for Drinking Water
- * High Recovery Rate & Lower Energy Cost
- * Options: - Anti-Scale Filter
- 185mm UV Sterilizer
- TDS/PLC Indicator
- * Capacity Range: **2000 ~4000** GPD

Unit Models

RC 2000N

RC 2000G

RC 4000N

RC 4000G



Industrial – RO Membrane Cleaning System Type MC Unit



- * System Type:
 - Off Site: Multiple Clean & Test System
 - On Site: Portable System in Cart

- * Applied Models of Membrane:
 - 4021
 - 4040
 - 8040 (or Multiple System)

- * Online Result Test & Indicator

- * Features:

- Stainless 304/316 Frame
- Stainless 304/316 Membrane Shell
- Italy ATLAS Housing for industrial chemical
- Plastic Pump designed for chemical liquid



Unit Models

MC-(OEM Type)

Application Fields:

- **Pure Water** Treatment Project for Beverage, Beer & Food Industries, more in Commercial Applicability
- **Ultra-pure Water** Treatment Project for Electronic, Car, Machinery Industry & Power Plant.
- **Sublimated Water** Treatment Project for Pharmacy, Hospital & Medicine Labs.
- **Potable Water** System for Residential Housings, Business Buildings and Public Accommodation.

ROTEK's Main Clients

Asahi Co., Japan — OEM RO system product & engineering; consulting

Aquafina (Pepsi Coca)— Bottle-water treatment turn-key project contractor;

Ice Dew (Coca cola) -- Beverage water treatment turn-key project contractor;

Tsingtao Beer -- Beer source water treatment turn-key project contractor;

For above clients, ROTEK is one of the less than 3 qualified China suppliers!!

Turn-Key Project Reference

Think Green

ROTEK has devoted itself to the development of environmental protection for several years.

ROTEK is trying its best to make our heavens more blue ,make the water more clear and make the trees more green.

医药用纯化水设备

Sublimated Water Equipment for Medicine



电子工业用超纯水设备

Ultra-pure Water Equipment for Electronic Industries



饮料、食品、啤酒、乳品行业用净化水设备

Purification Water Equipment for Drink, Food, Beer, Dairy Industries



楼宇分质供水

Potable Water Supply to the Buildings By Quality



冶金、化工、电力用高纯水设备

工业用软化水设备

除Fe、Mn净水设备

High Pure Water Equipment for Metallurgy, Petroleum, Chemical, Electric Power Industry
soft Water Equipment Used In Industry
Purification Water Equipment for use with Eliminating Fe, Mn



城市污水处理

MUNICIPAL WASTEWATER TREATMENT



PCF过滤器

孔隙控制纤维过滤器
PORE CONTROL FILTER

PCF TWIST FILTER Soft Micro-fiber Filtration Technology
Pore Control Fiber(Twist)Filter
High Performance, Compact Size, Lightness, Low Price!



R.O.纯净水设备/矿泉水设备 桶装、瓶装、商用纯净水设备、家用纯水机 学校、机关、企/事业R.O.纯净水设备

RO Purity Water Equipment for Drinking/Mineral Water Equipment
PC-barreled, Bottled, Commercial Purity Water Equipment/RO Drinking Water Systems for Households/RO Drinking Water Systems Used In School, Offices, Enterprise



CCTV Corp. Building, Beijing



10 T/hr NF, drinking water system supplying entire new 2008 CCTV complex

Coca Cola Line, JiangXi



In 2008, ROTEK has finished Bottled Coca Cola carbon drink lines in China. 50+25 T/hr RO, One Phase, SUS304 Piping with Coca Cola Qualified.

Ice Dew (Coca Cola) Lines, China



In 2005~2006, ROTEK has finished 26 lines of “Ice Dew” bottle water in China. Finish a production line (or a workshop) within average 25 days in 12 provinces. ROTEK has successfully cooperated with Coca Cola to establish most the plants

Ice Dew (Coca Cola), China



Drinking Bottled water (600ml) assembling line in Beijing.
Max. production ability is 36,000 bottles per Hour !!

Ice Dew (Coca Cola), China



80 T/hr, Double Phase + Auto Mixing Beds + SUS316L Piping
National QS awarded and Coca Cola approved Quality

Tsingtao Beer, Shanghai



30~100 T/hr RO, Single Phase + Auto Mixing Bed + Entire SUS304 Piping
National QS and Tsingtao qualified with certificates for over its 5 factories

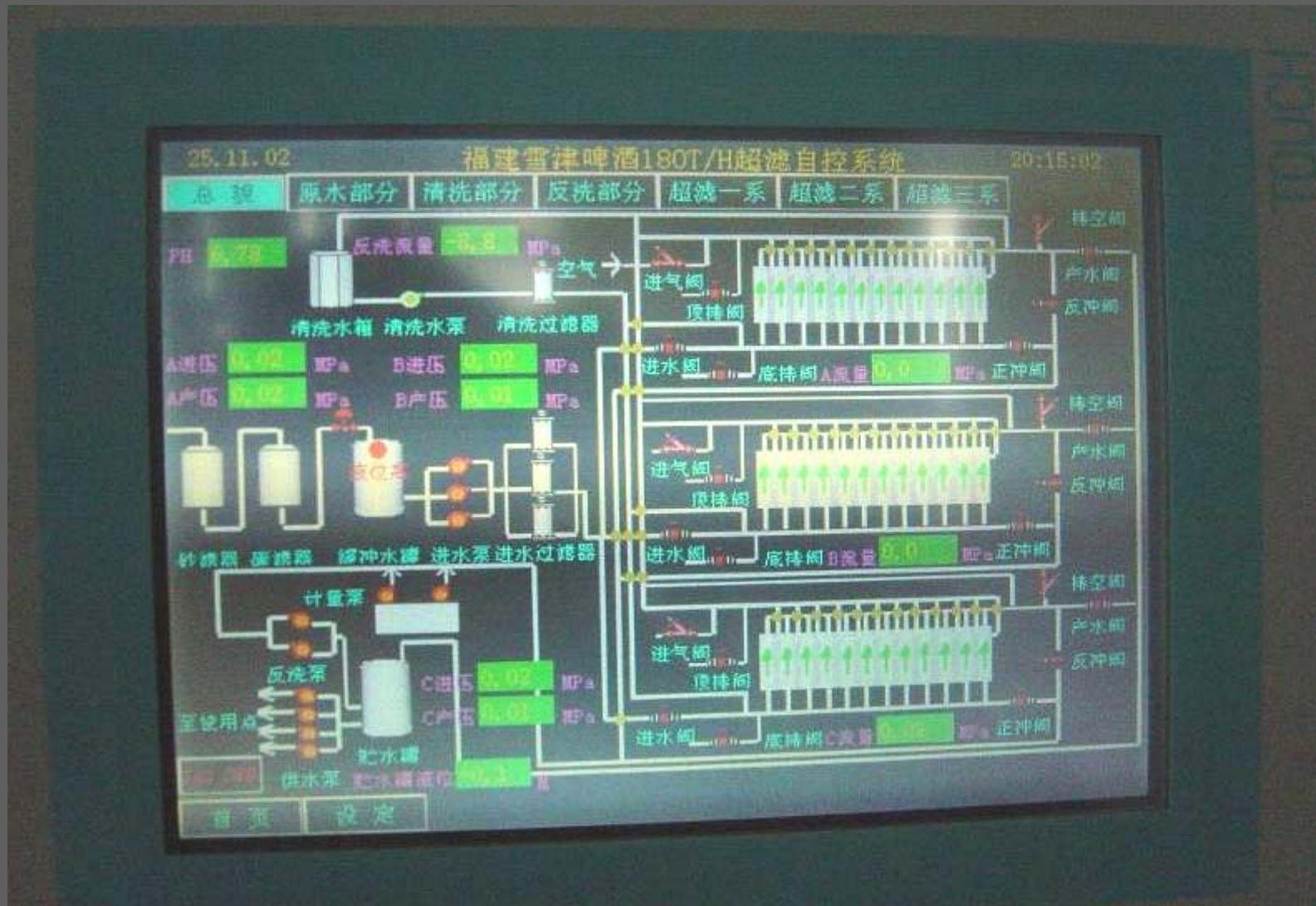
Snow Beer Factory, Xiamen



240 T/hr-UF + SUS316 Piping



Xuehua Beer Factory, Xiamen



180 T/hr-UF with Multi-Control Touch Interface

ASAHI Project, SONY Suzhou Factory



280 T/H RO+NF Pre-filtration, Waste Water Re-use

Foxconn Corp., Shanghai

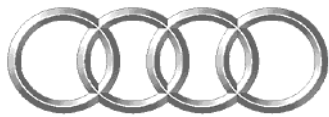


FOXCONN®
富士康科技集团



5,7,10 T/hr +EDI, Single Phase + LED Flow Panel + UPVC Piping
High Quality ULTRA-PURE water for 3 Foxconn's Laptop Screen Panel plants

First Car Maker (Audi), Changchun



Audi



45 T/hr RO, Double Phase + Auto Mixing Beds + Entire SUS304 Piping
PLC Real-time Operation Control between factory & Headquarter in German

First Car Maker (Audi), Changchun



20 T/hr Softener (FRP Tanks + Fleck Controllers)

Softener and RO is designed for Spray-painting line with mixed water source

BMW Motor, Shenyang, Liaoning



15 T/hr RO, Double Phase + Auto Mixing Beds

Softener and RO Unit are designed for Spray-painting line with mixed water source

BMW Motor, Shenyang, Liaoning



15 T/hr RO, Double Phase with Multi-control Panel to operate system
With outstanding quality & service, we are awarded annually maintenance contracts

Mitsubishi Motor, Beijing



20 T/hr Softener and RO for Spray-painting line with mixed water source

Mitsubishi Motor, Beijing



20 T/hr RO, Double Phase + Auto Mixing Beds with Multi-control Panel

ZhaoQing Power Plant, Shanxi



130 T/hr RO + EDI for Ultra-pure water source into the power generator

Ji-lin Pharmacy, Jilin



10T/hr RO, Single Phase + Auto Mixing Bed + Entire SUS304 Piping
A GMP qualified system with certificates

Sun Yat-Sen University, Guangdong



10 T/hr RO for in-house drinking water plant supplying the whole campus
One of the biggest university drinking water BOT project in Southern China

Baotou 1st Machinery Corp., Inner Mongolia



30 T/hr NF for drinking water supplying the entire TOWN with factory & residence
One of the biggest scale project of drinking water supplying system in China, 2007

More than **1,000** projects in China
for the past 15 years

and,....we are **continuing**.....

thank you